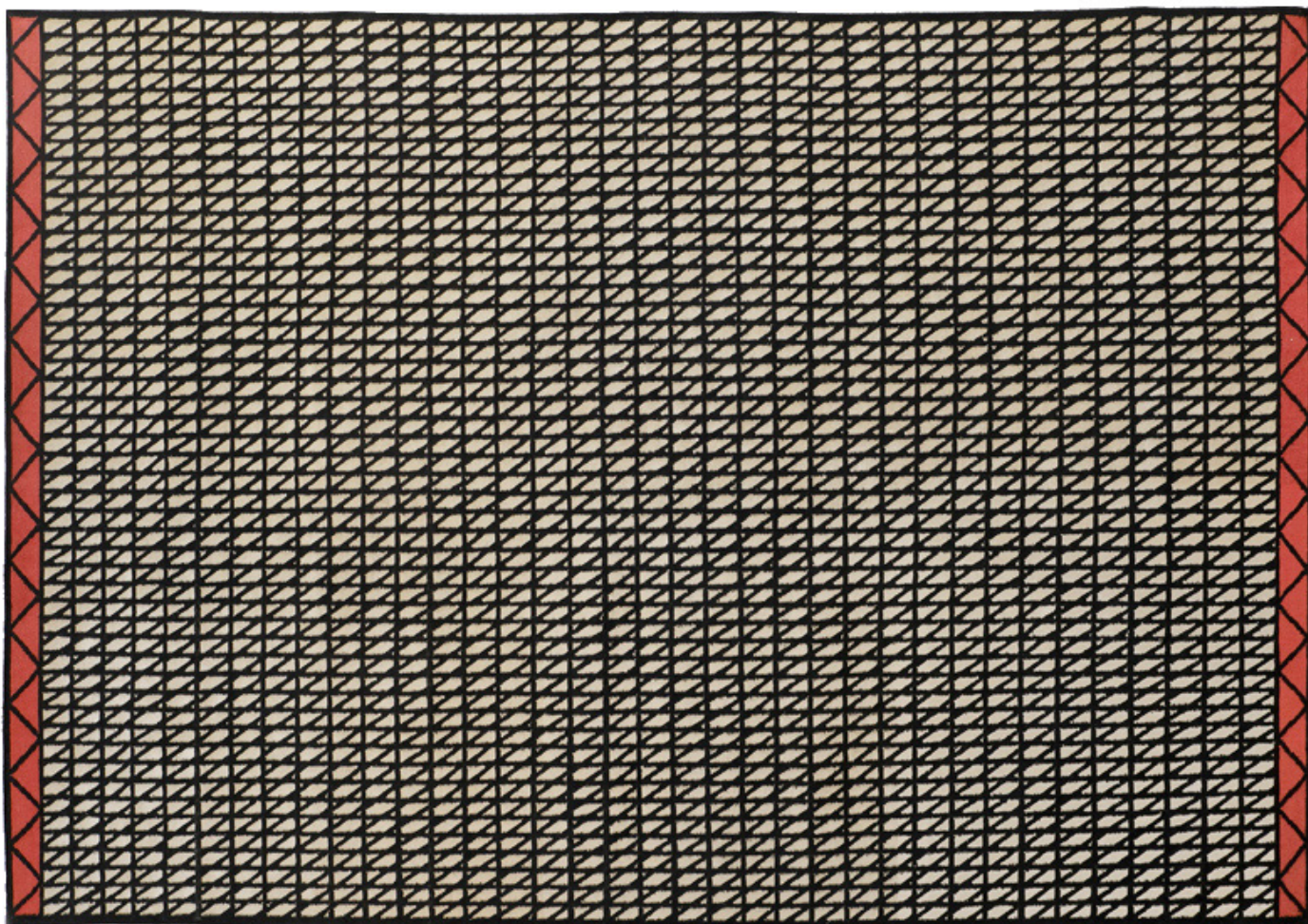


KILIM HATCH I

DESIGNED BY PAOLO GIORDANO



GENERALS

MATERIAL:

**WOOL
COTTON**

HANDMADE IN INDIA

SIZE:

**170X240 CM
200X300 CM**

TECHNIQUE:

HANDWOVEN

WEIGHT:

1,50 KG/M²

HEIGHT:

0,60 CM

DESCRIPTION

The new I+I Kilims approach contemporary geometry. Constructed as a flatweave in the manner of traditional dhurrie floor coverings, these rugs are a remarkable example of skilled craftsmanship. Modern through a traditional manufacture. Due to its handcrafted nature, these Kilims will vary slightly in weave, color and pattern.



collection

via Osti 2, Milano,
20122 (MI), ITALIA

+39 02 89513620

www.i-and-i.it
@iandi_collection
info@paologordanodesign.com
p.iva 09082800963